



Adding image galleries inside your Joomla! articles has never been easier!

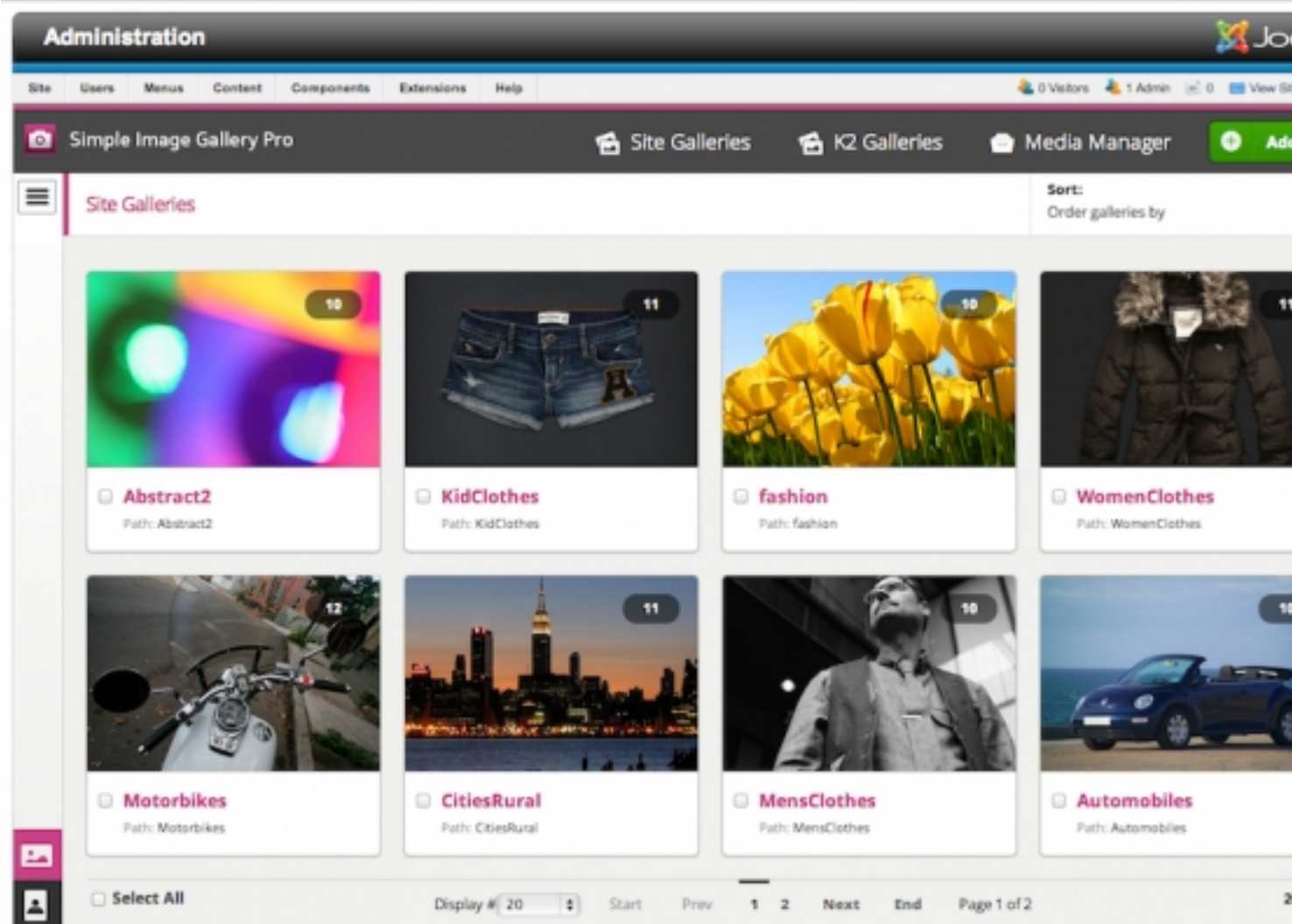
Using the "**Simple Image Gallery PRO**" extension from [JoomlaWorks](#) you can quickly display a folder of images on your server as a stylish image gallery within any Joomla! article, K2 item, Virtuemart or HikaShop product and any other Joomla! extension that loads the Joomla! WYSIWYG editor (TinyMCE, JCE, JCK Editor etc.).

The process is dead simple. You just click the "**Simple Image Gallery PRO**" editor plugin button located under any WYSIWYG editor box, anywhere in Joomla! and you can easily select an image folder to present as an image gallery on your site. Don't have images uploaded yet? You can just drag and drop images in the extension's built-in uploader and batch upload images, one by one, without overloading your server or requiring high memory limits from PHP. Then add captions using the intuitive interface, save and simply select to add inside your Joomla! content.

Simple Image Gallery Pro - Joomla! image galleries redefined!

Written by Administrator

Friday, 05 October 2018 09:19 - Last Updated Tuesday, 19 February 2019 21:10



DEMOS

Galleria gallery layout with SimpleBox - captions disabled, thumb dimensions set to 74x50

```
{jwgallery}movies2012:74:50:0:0:simplebox:Galleria{/jwgallery}
```

Simple Image Gallery Pro - Joomla! image galleries redefined!

Written by Administrator

Friday, 05 October 2018 09:19 - Last Updated Tuesday, 19 February 2019 21:10

Polaroids gallery layout with FancyBox (responsive) - using generic captions, thumb dimensions set to 180x130

```
{jwgallery}casino_royale:240:160::jquery_fancybox:Polaroids{/jwgallery}
```

Galleria White gallery layout with SimpleBox - using captions from a remote Flickr photo set, retrieving the last 12 Flickr images from the set, thumb dimensions set to 100x70

```
{jwgallery}https://www.flickr.com/photos/soeren_nb/sets/72157635544498811:12:100:70::simplebox:GalleriaWhite{/jwgallery}
```

Elegant gallery layout with Magnific Popup (responsive) - using generic captions, thumb dimensions set to 180x130

```
{jwgallery}casino_royale:180:130::jquery_magnificpopup:Elegant{/jwgallery}
```

ResponsiveBlue gallery layout with PrettyPhoto - using default plugin settings, overriding caption handling (set to none)

```
{jwgallery}walkman:::0:jquery_prettyphoto:ResponsiveBlue{/jwgallery}
```

Simple Image Gallery Pro - Joomla! image galleries redefined!

Written by Administrator

Friday, 05 October 2018 09:19 - Last Updated Tuesday, 19 February 2019 21:10

Elegant gallery layout with Colorbox - using captions from a remote Flickr photo set, retrieving the last 12 Flickr images from the set, thumb dimensions set to 200x160

```
{jwgallery}https://www.flickr.com/photos/pe7er/albums/72157619730141620:12:200:160:0:2:jquery_colorbox:Elegant{/jwgallery}
```

Artistic gallery layout with Nivo Lightbox (responsive) - using captions from a remote Flickr photo set, retrieving the last 9 Flickr images from the set, thumb dimensions set to 200x160

```
{jwgallery}https://www.flickr.com/photos/95836084@N00/sets/72157623215082761/:9:200:160:0:2:jquery_nivolightbox:Artistic{/jwgallery}
```

Polaroids gallery layout in single thumbnail mode with Fancybox (responsive) - using Flickr captions from a remote Flickr photo set, retrieving the last 6 Flickr images from the set (viewable by navigating when "in" the popup image), single thumb dimensions set to 300x180

```
{jwgallery}https://www.flickr.com/photos/kiwirider/sets/72157623822354363/:6:300:180:1:2:jquery_fancybox:Polaroids{/jwgallery}
```